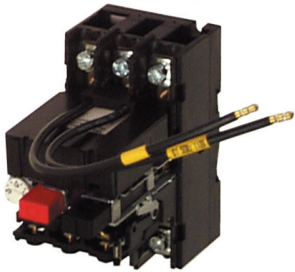


ENCLOSURES & ACCESSORIES



MBS 25-105 Lock Off Kit

MBS 25 Accessories

Pilot Light for above enclosures. Specify color ** and voltage *

Catalog No.	List Price
MBS25-PL- * - **	\$16

* Voltage Suffix **Color Suffix

-A 120V	
-C 220V	-G green
-D 380V	-R red
-E 480V	
-Example:	
MBS25-PL-A-R	

Enclosure Type S4 IP55 Dust/Watertight

Enclosure, NEMA 7 Hazardous Area
Flush Plate with Gasket IP55 Dust/Watertight

Replacement Start/Stop Boot

Neutral Link for mounting above enclosures

Padlock Accessories for enclosures for up to 3 padlocks use PG Adaptor to 1/2" NPT

Red Mushroom Operator for above enclosure IP55

Latch Type MR

Key Release MR

Momentary MR

Auxiliary Contacts Side Mount

1 N.O., 1 N.C.

2 N.O.

1 N.O., 1 N.C. Early Activating

2 N.O. Early Activating

Auxiliary Contacts Inside Mount 1 N.O., 1 N.C.

TRIP Alarm Aux. Switch Inside mount

1 N.O.

1 N.C.

SHUNT TRIP KIT * specify voltage

* -A 120V 60 Hz 110V 50 Hz

-C 240V 60 Hz 220V 50 Hz

-D 380V 50 Hz

-E 480V 60 Hz

-G 24V 60 Hz

UNDERVOLTAGE TRIP * specify voltage

see above

Combination Rail Mounting Brackets

Includes 2 DIN Rails to mount MBS25 and LS contactors

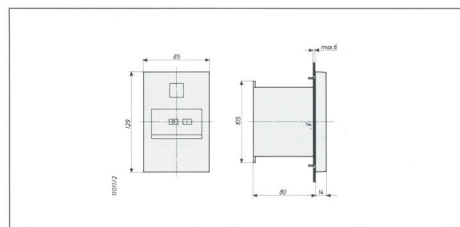
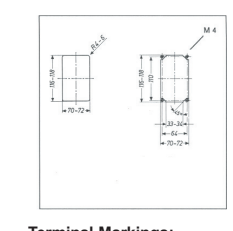
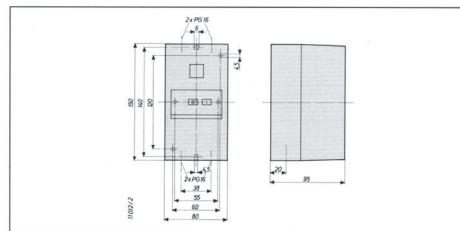
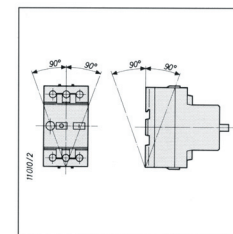
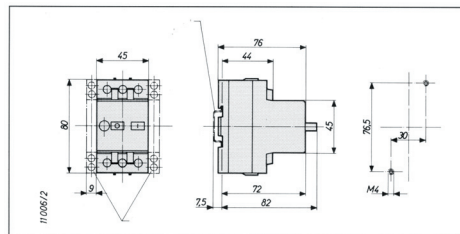
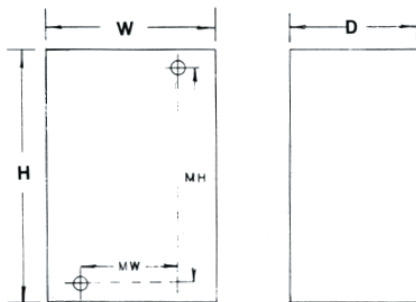
Current Limiter Rapid Module

For increasing fault current breaking capacity of MBS 25 up to 50 KA/3 380V max.

Catalog No.	List Price
MBS25-S4	\$30
MBS25-M7	\$665
MBS25-S4F	\$16
MBS25-S4-116	\$8
MBS25-114	\$7
MBS25-105	\$13
PG16-1/2	\$5.50
MBS25-106	\$30
MBS25-107	\$61
MBS25-108	\$19
HS9.11	\$20
HS9.20	\$15
HS9V.11	\$25
HS9V.20	\$15
HS10.11	\$20
HS10R10	\$20
HS10R01	\$20
MBS25-101-*	\$48
MBS25-100-*	\$48
MBS25-206	\$15
MBS 25-140	\$50

Overall Dimensions	OPEN	ENCLOSED-S4
	MBS-25	MBS-25
H Height	3.14	5.9
W Width	1.77	3.14
D Depth	2.99	3.79
MH Mounting Height	3.01	4.72
MW Mounting Width	1.18	2.36

Dimensions less handles or buttons.



Terminal Markings:

- C1, C2 - a trip
- D1, D2 - r trip
- 13/14 - 1. aux. switch, 1N.O.
- 21/22 - 1. aux. switch, 1N.C.
- 31/32 - 2. aux. switch, 1N.C.
- 43/44 - 2. aux. switch, 1N.O.
- 13/14 - 1. aux. switch, 1N.O.
- 23/24 - 1. aux. switch, 1N.O.
- 33/34 - 2. aux. switch, 1N.O.
- 43/44 - 2. aux. switch, 1N.O.