

Single Phase Power Supply Type GSA-SWD



Compact Size
UL Listed

Standard Sizes: 24 Volt DC Output
 1.25 Amp
 2.5 Amp
 5 Amp
 10 Amp
 20 Amp

Normal Input Voltages:
100 / 240VAC

Output Voltages:
24V DC $-5%$ + 15% Adjustable

Three Phase Power Supply Type GSA-TOP



Compact Size
Conform to CE
EN 55011 c1. B (EN 61000-3-2 on request)

Standard Sizes: 24Volt DC Output
 10 Amp
 20 Amp
 30 Amp
 40 Amp
 50 Amp

Normal Input Voltage:
360 Volt thru 500 Volt

Output Voltages:
24V DC $\pm 10%$ Adjustable

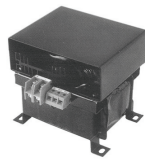
Designed for Parallel Connection
Negative Connection can be grounded

DETAS
POWER SUPPLIES

Other Power Supplies Available AC to DC



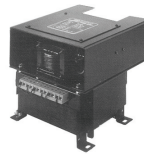
Type TLM
1Ø 230V, 460V



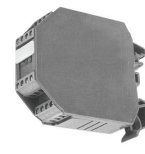
Type TRC
3Ø 400V



Type TRTL
3Ø 400V



Type TLT
3Ø 380/400/415



Type LCC
24VAC



Type LCF
1Ø 24VAC



Type LCL
1Ø 400/230/115



Type SW
AC or DC
Input



Type SWL
1Ø 115/230/400